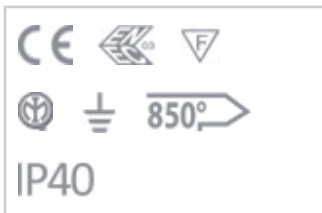
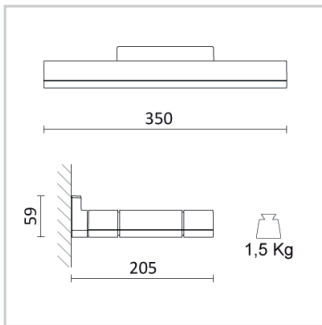
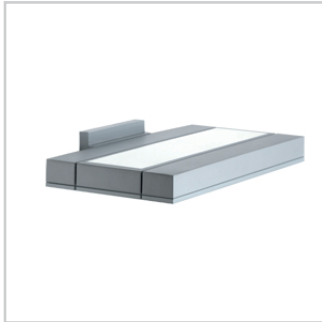


## Wall LINE



### Product code

### Color

Mat white  
Silver

### General specifications

Product type : Wall-bracket  
Mounting type : Wall-bracket  
Description : Wall Line is a wall bracket for indirect lighting, for LED sources of the last generation, that combine high power and low energy consumption. Uniform light distribution, high visual comfort and passive heat dissipation. Body and bracket in die-cast aluminium. Diffuser in opal polycarbonate.

Indoor/outdoor lights : Indoor  
Applications : Accommodation facilities, Corridors, Entrances, Halls, Public and domestic spaces

### Lighting specifications

Lamps description : LED 2600lm 30W 3000K  
Nominal lumens on thermal regime : 2600  
Efficiency L.O.R. (%) : 82,0  
Delivered lumens(lm) : 2131  
Lamp wattage (W) : 30  
Color temperature (K) : 3000

### Physical specifications

Body : Die-cast aluminium  
Finishes : Polyester painted  
Thermal Dissipation : Passive

### Electrical specifications

Driver availability : Included  
Driver mounting : Integrated  
Voltage (V) : 230/240  
Frequency (Hz) : 50/60


### Weight and dimensions

Shape : Rectangular  
Length (mm) : 350  
Width (mm) : 205  
Height (mm) : 59  
Weight (Kg) : 1.5

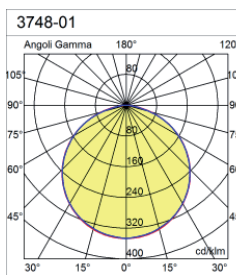


### Optical specifications

Light distribution : Symmetric  
Light emission : Indirect  
Light beam (°) : 110°

## Wall LINE

Lamps	Categories	Type	Wattage (W)	Nominal lumens on thermal regime	Color Temp. (K)	CRI
	LED	LED	30	2600	3000	85

## Photometrics

3748-01 Angol Gamma 180° 120° 90° 75° 60° 45° 30° 15° 0° 15° 30° cd/km	LINE LED 30W 2600 lm				R:100%		I.Max:346 Cd/Klm			
	H[m]	D[m]	Max lux	Med lux	Alpha=114°	H[m]	D[m]	Max lux	Med lux	Beta=114°
	1.00	3.11	738	172		1.00	3.09	738	172	
	2.00	6.22	185	43		2.00	6.18	185	43	
	3.00	9.33	82	19		3.00	9.27	82	19	
	4.00	12.44	46	11		4.00	12.36	46	11	
	5.00	15.55	30	7		5.00	15.45	30	7	

## Pictures and Applications

